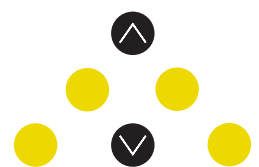




CABINA MODELLO PANORAMICO SPECIALE



CABINA “PANORAMICO SPECIALE”

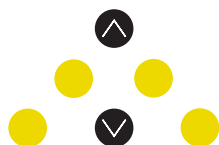
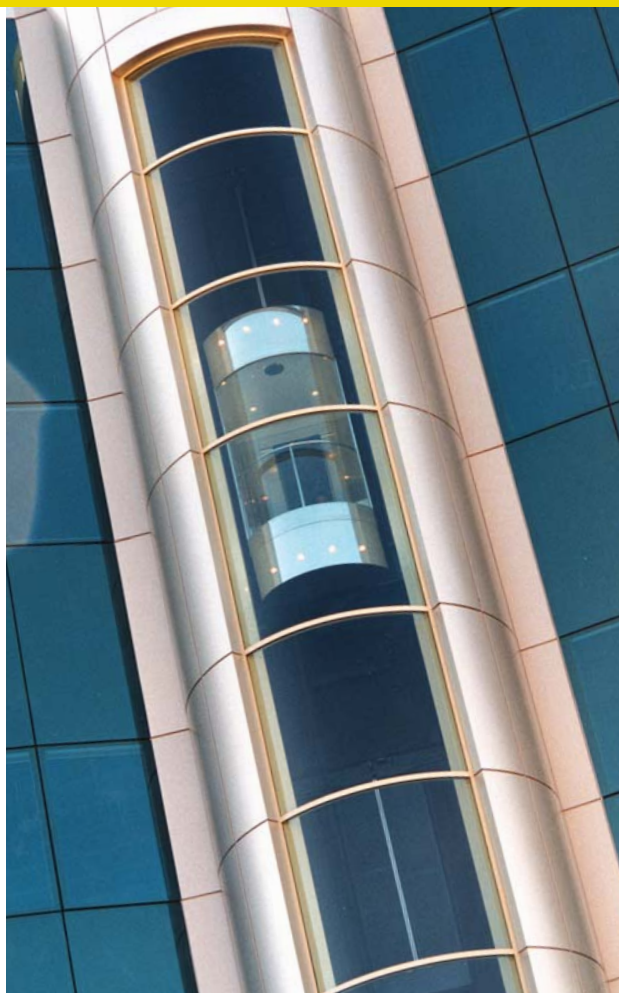
- Pareti in vetro marchiato
- Fondo fisso rivestito in gomma o linoleum
- Tetto in lamiera nera verniciato bianco con illuminazione a faretto
- Specchio marchiato
- Zoccolatura e montanti in acciaio inox lucido o satinato o scotch bright
- Pulsantiera a colonna verticale predisposta per pulsanti e segnalazioni
- Uno o più accessi
- Grembiule sotto accesso cabina (a norma EN 81.2)
- Areazione cabina

“SPECIAL PANORAMIC” CABIN

- Cabin linings and doors in load bearing plasticized sheet steel
- Flooring covered in rubber and linoleum
- Ceiling in black sheet steel painted white with spot lighting
- Mirror with safety markings
- Skirting board and uprights in plasticized sheet steel or stainless steel
- Switch panel housed in a vertical column with option to mount buttons and warning displays
- One or more accesses
- Under cabin screen as per Regulation EN 81.2
- Cabin ventilation

“SPEZIAL PANORAMAKABINE”

- Wände aus Glas mit Markenzeichen
- Fester Boden mit Belag aus Gummi oder Linoleum
- Weißlackiertes Dach aus Schwarzblech mit Spot-Beleuchtung
- Siegel mit Markenzeichen
- Sockel und Pfosten aus Edelstahl, poliert oder satiniert, oder Scotch Bright
- Tastfeld an vertikaler Säule, vorbereitet für Tasten und Anzeigen
- Eine oder mehrere Achsen
- Schürze unter Kabinenzugang (gemäß Norm EN 81.2)
- Kabinenbelüftung



NUOVA CABILIFT

< costruzione cabine per ascensori >

NUOVA CABI LIFT - via Dell'Artigianato 13 - 47838 Riccione
tel +39 0541 600341 - fax +39 0541 695704 - www.nuovacabilift.com